

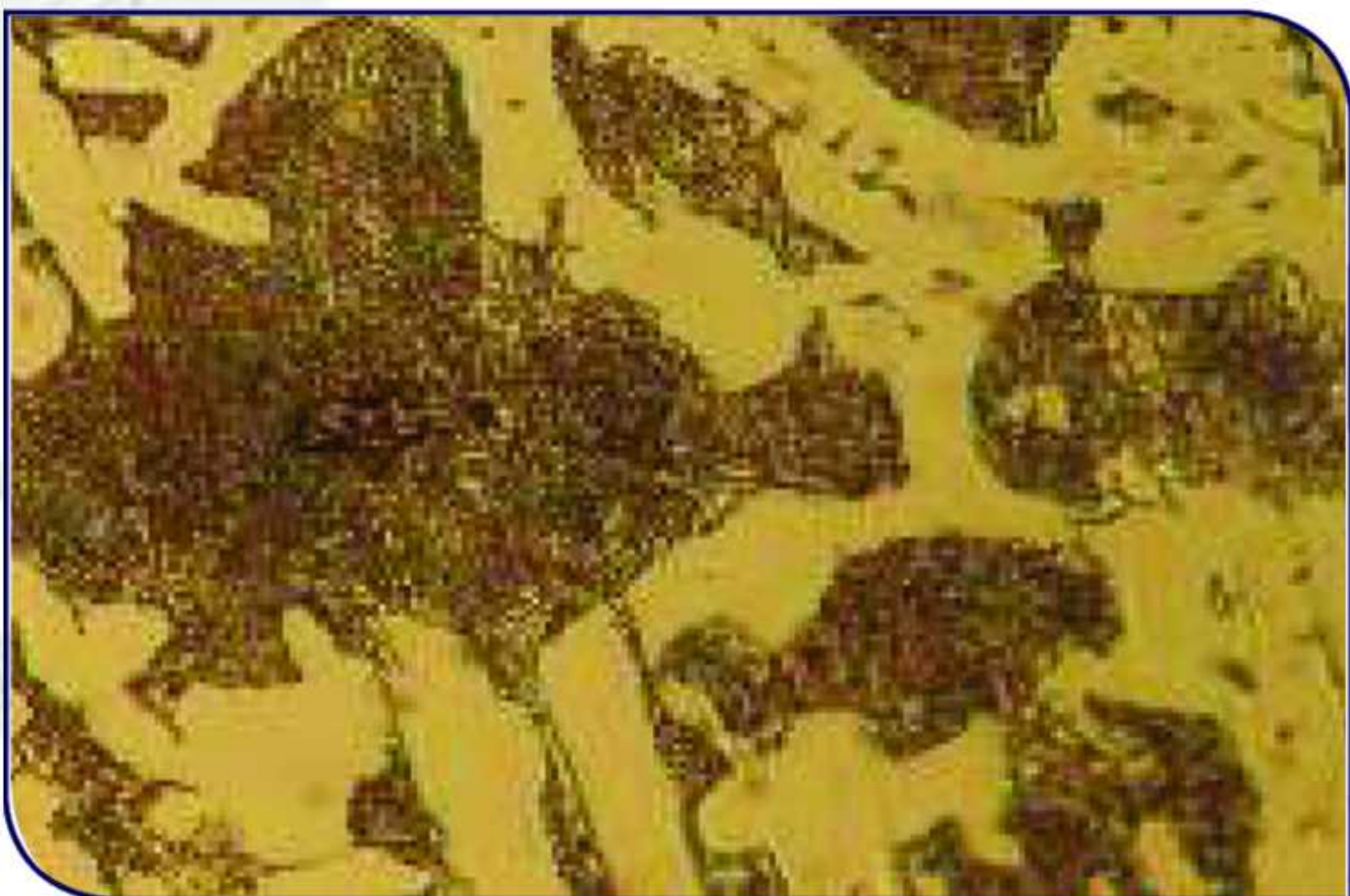
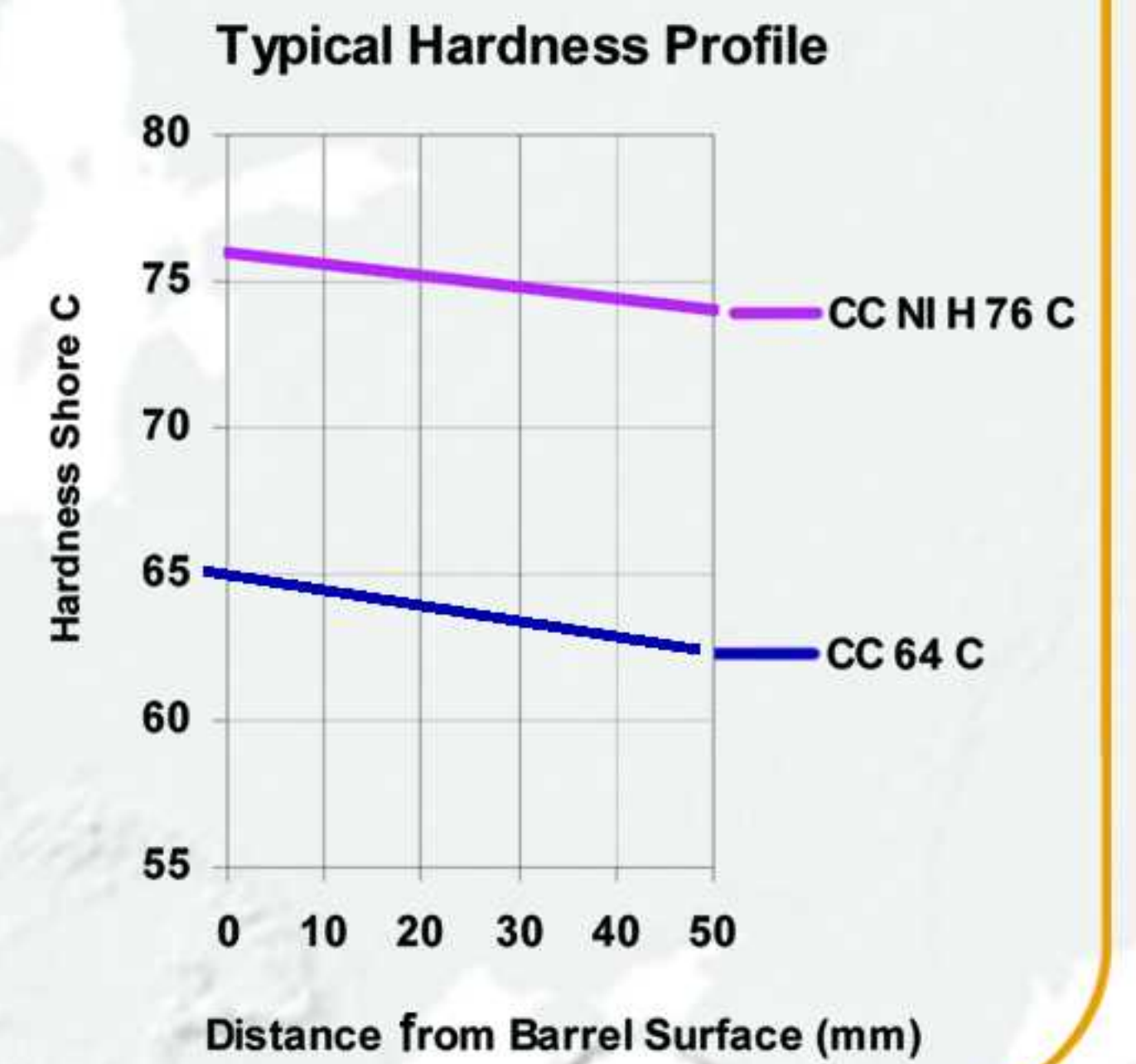
Roll Grade Descriptions

CC

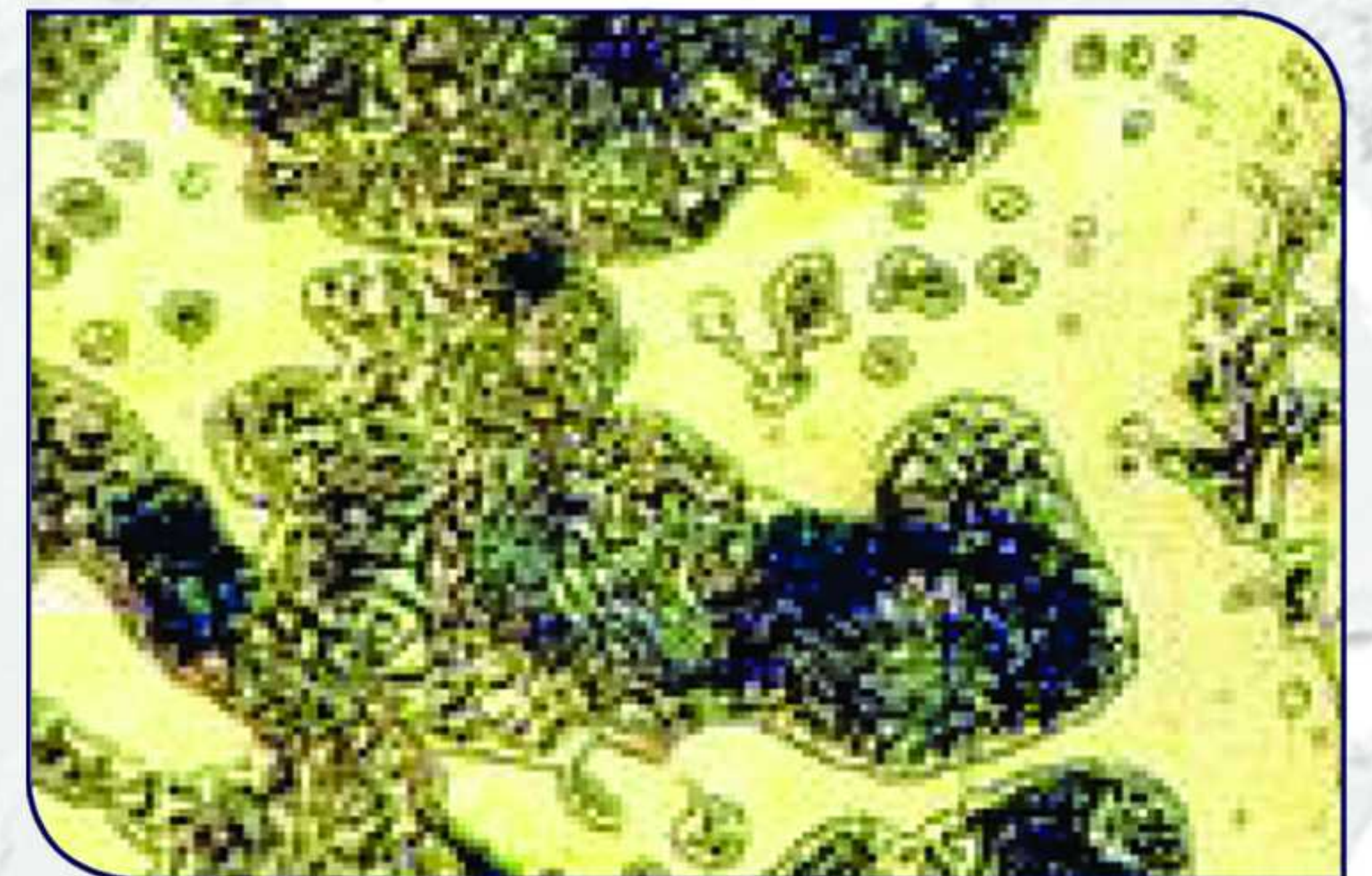
Clear Chill Rolls

Clear chill iron rolls are cast to produce an outer shell layer free of graphite, containing substantial amounts of carbides. Rolls of this family have excellent wear resistance but are sensitive to fire cracking. These rolls are either produced single or double poured depending on the application

CSROLL
CHODANSAZAN



CC64C-Pearlitic Matrix with Carbides (x400)



CCNiH72C- Acicular Matrix with Carbides (x400)

Chemical Composition and Mechanical Properties for Clear Chill Rolls

Roll Grade	Barrels Hardness (Shc)	C (%)	Si (%)	Mn (%)	Cr (%)	Ni (%)	Mo (%)	Composition hardness and Properties of core material
CC60C	60	3.0-3.6	0.3-0.7	0.1-0.5	0.3-1.4	0.2-0.8	0.1-0.3	See Page A
CC64C	64	3.0-3.6	0.3-0.7	0.1-0.5	0.3-1.4	0.2-0.8	0.1-0.3	See Page A
CC68C	68	3.0-3.8	0.3-0.7	0.1-0.5	0.3-1.4	0.4-1.0	0.1-0.3	See Page A
CCNiH72C	72	3.2-3.8	0.3-0.7	0.1-0.5	0.8-1.5	1.5-2.5	0.2-0.6	See Page A
CCNiH76C	76	3.2-3.8	0.3-0.7	0.3-0.8	0.8-1.5	2.0-3.5	0.2-0.6	See Page A
CCNiH80C	80	3.2-3.8	0.3-0.7	0.3-0.8	0.8-1.5	2.0-3.5	0.2-0.6	See Page A

Note: Other roll grades, not specified in the table can be produced on request. Cores for compound rolls can be produced on request with Grey, Compact or Nodular cast iron.

