

Roll Grade Discriptions

CSROLL
CHODANSAZAN

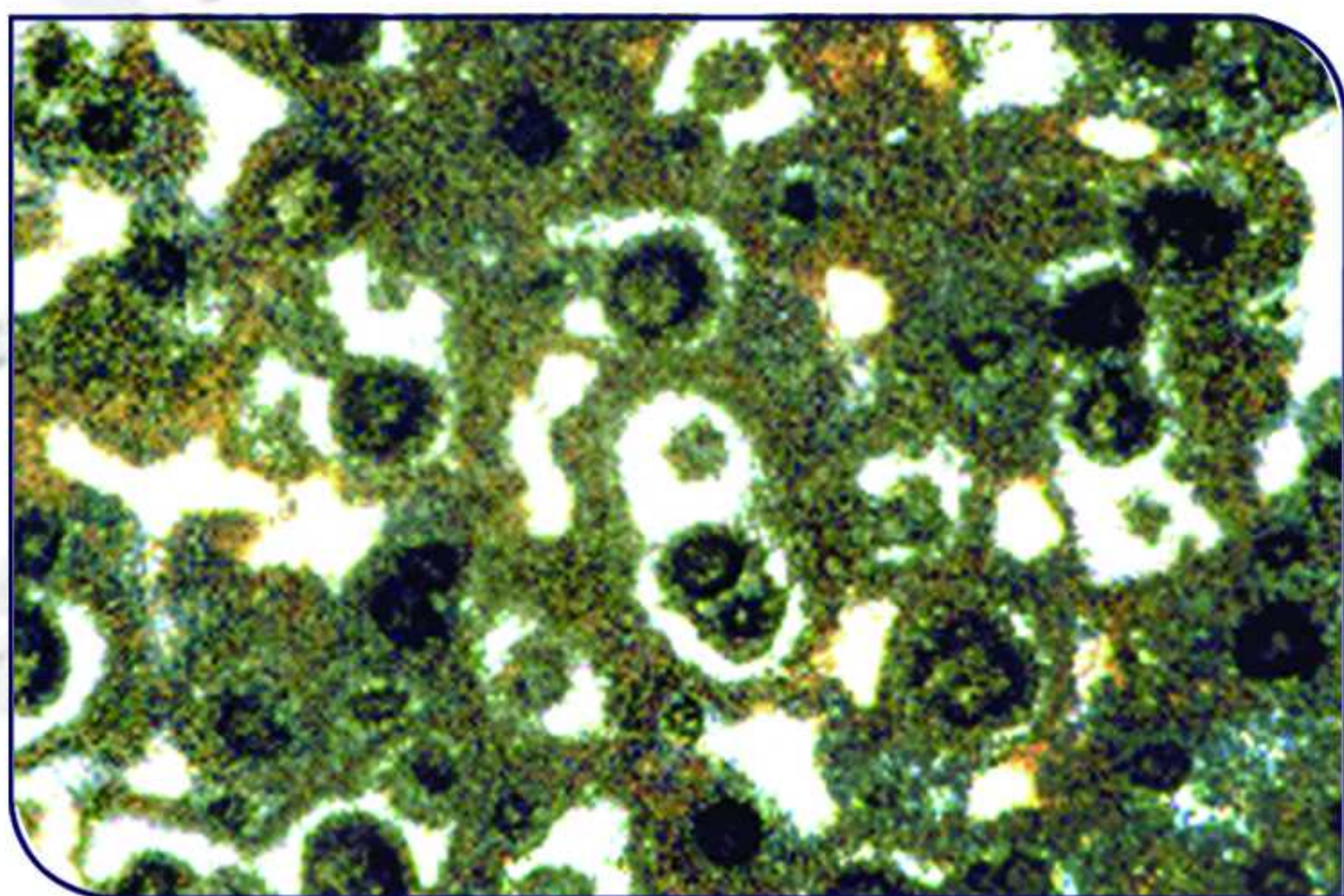
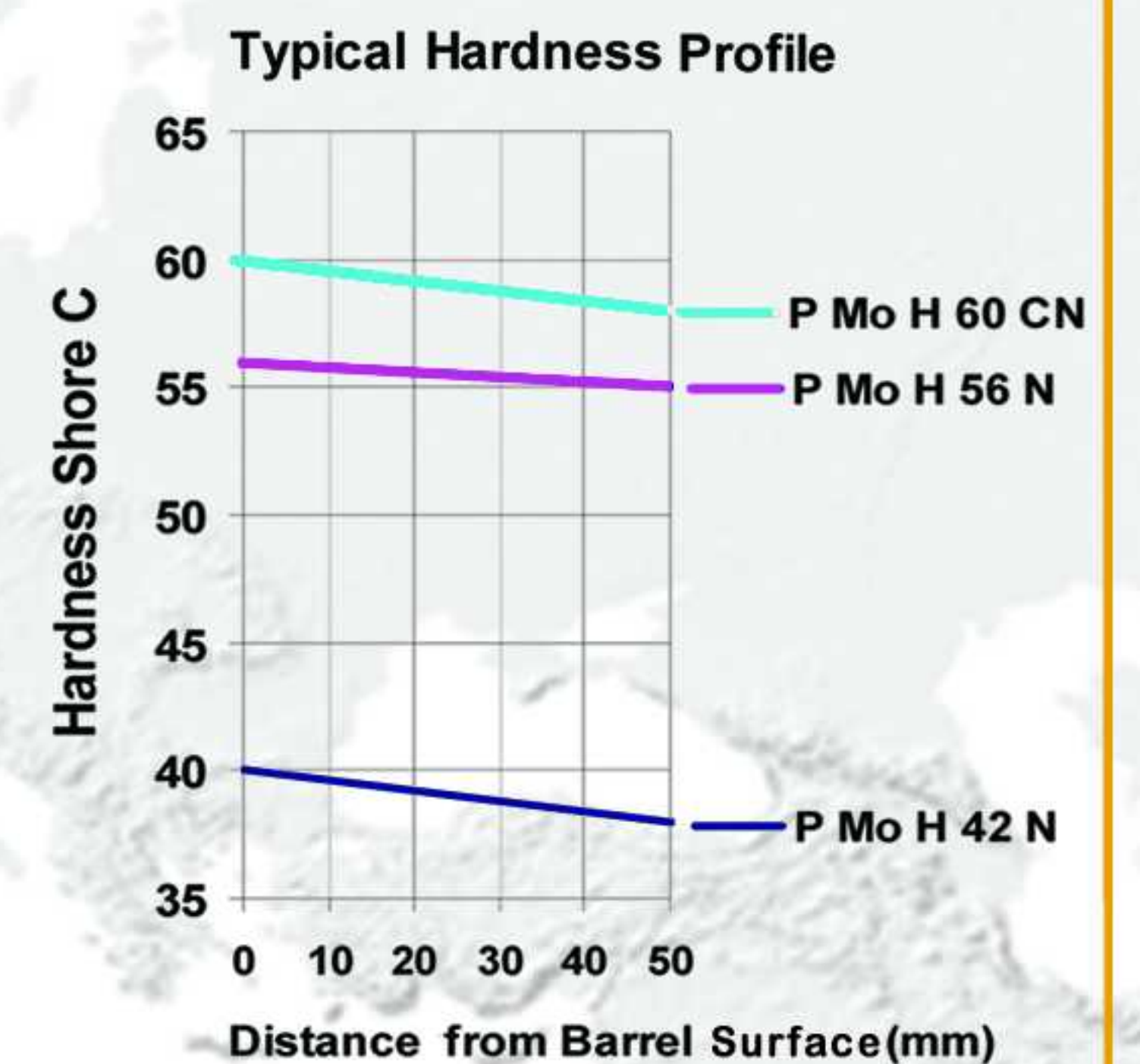
PMo

Normalized Molybdenum Alloyed Rolls

Harder grades have small amounts of carbides in a matrix of normalized fine pearlite. Softer grades have small amounts of Bull's Eyes ferrite.

They have a small hardness drop. Their fire cracking resistance is the best among all grades of cast iron rolls. Their tensile strength is comparable to graphite steel or cast steel rolls.

These rolls are primarily used for hot rolling applications in roughing and blooming stands.



PMoH42N-Pearlitic Matrix with Bull's Eyes Ferrite and some free Ferrite(x100)



PMoH48N-Pearlitic Matrix with some Carbide(x500)

Chemical Composition and Mechanical Properties for Normalized Molybdenum Alloyed Rolls

Roll Grade	Barrels Hardness (Shc)	C (%)	Si (%)	Mn (%)	Cr (%)	Ni (%)	Mo (%)	Tensile Strength (N/mm) ²	Bending Strength (N/mm) ²
PMoH42N	42	3.1-3.5	1.6-2.4	0.2-0.6	0.1-0.4	1.5-2.6	0.4-0.9	600-750	900-1400
PMoH44N	44	3.1-3.5	1.6-2.4	0.2-0.6	0.1-0.4	1.5-2.6	0.4-0.9	600-750	900-1400
PMoH48N	48	3.1-3.5	1.6-2.4	0.3-0.8	0.1-0.4	1.5-2.6	0.4-0.9	600-750	900-1400
PMoH52N	52	3.1-3.5	1.2-2.0	0.3-0.8	0.2-0.8	1.6-2.8	0.5-1.1	600-750	800-1200
PMoH56N	56	3.1-3.5	1.2-2.0	0.4-1.0	0.2-0.8	1.6-2.8	0.5-1.1	500-650	800-1200
PMoH60N	60	3.1-3.5	1.2-2.0	0.4-1.0	0.4-0.8	1.6-3.0	0.5-1.1	500-650	800-1200
PMoH56CN	56	3.1-3.5	1.0-2.0	0.4-1.0	0.4-0.8	1.6-2.8	0.5-1.1	See Page A	
PMoH60CN	60	3.1-3.5	1.0-2.0	0.4-1.0	0.4-0.8	1.6-3.0	0.5-1.1	See Page A	

Note: Other roll grades, not specified in the tabel are producible on request.

