

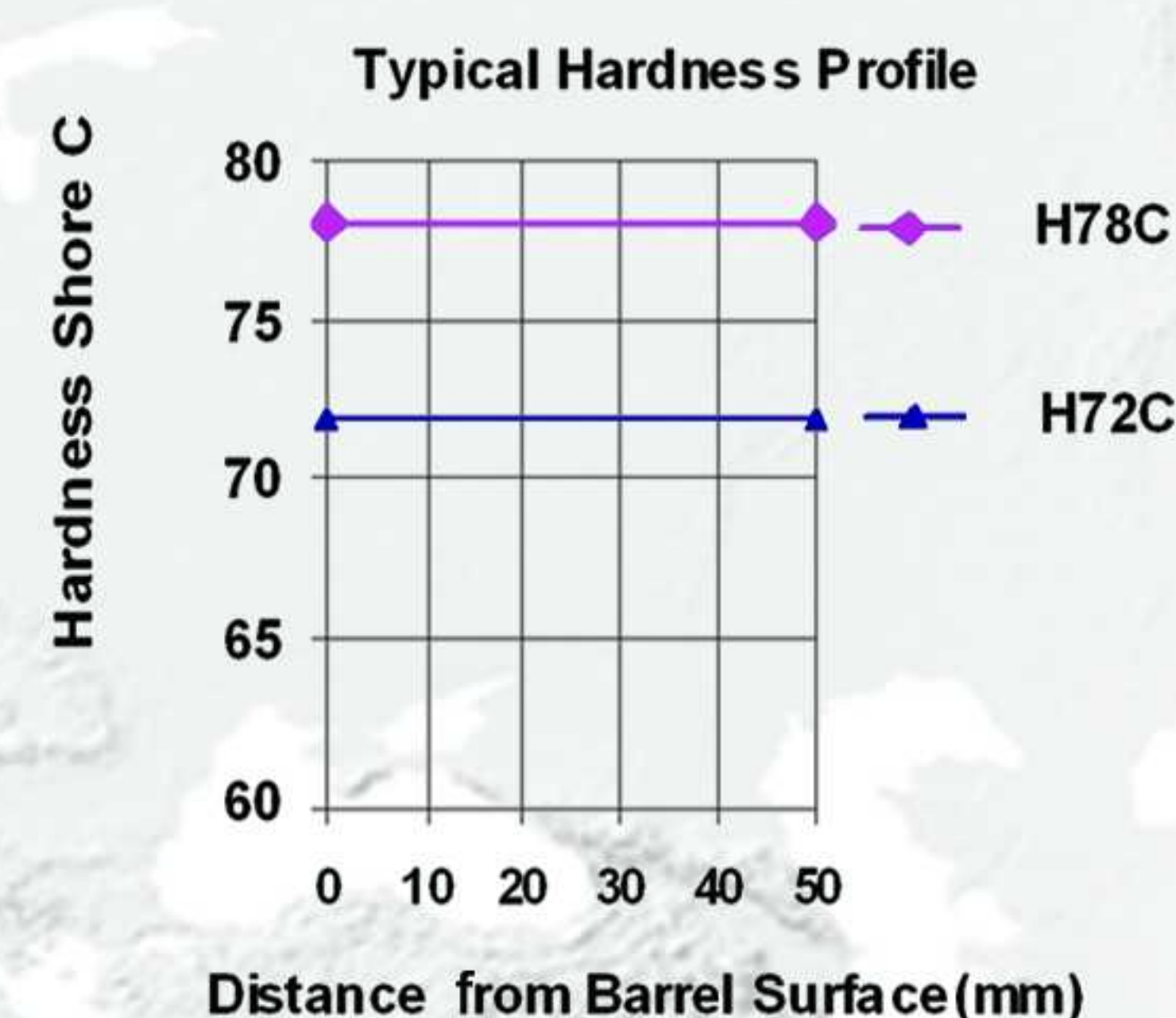
Roll Grade Descriptions

SS

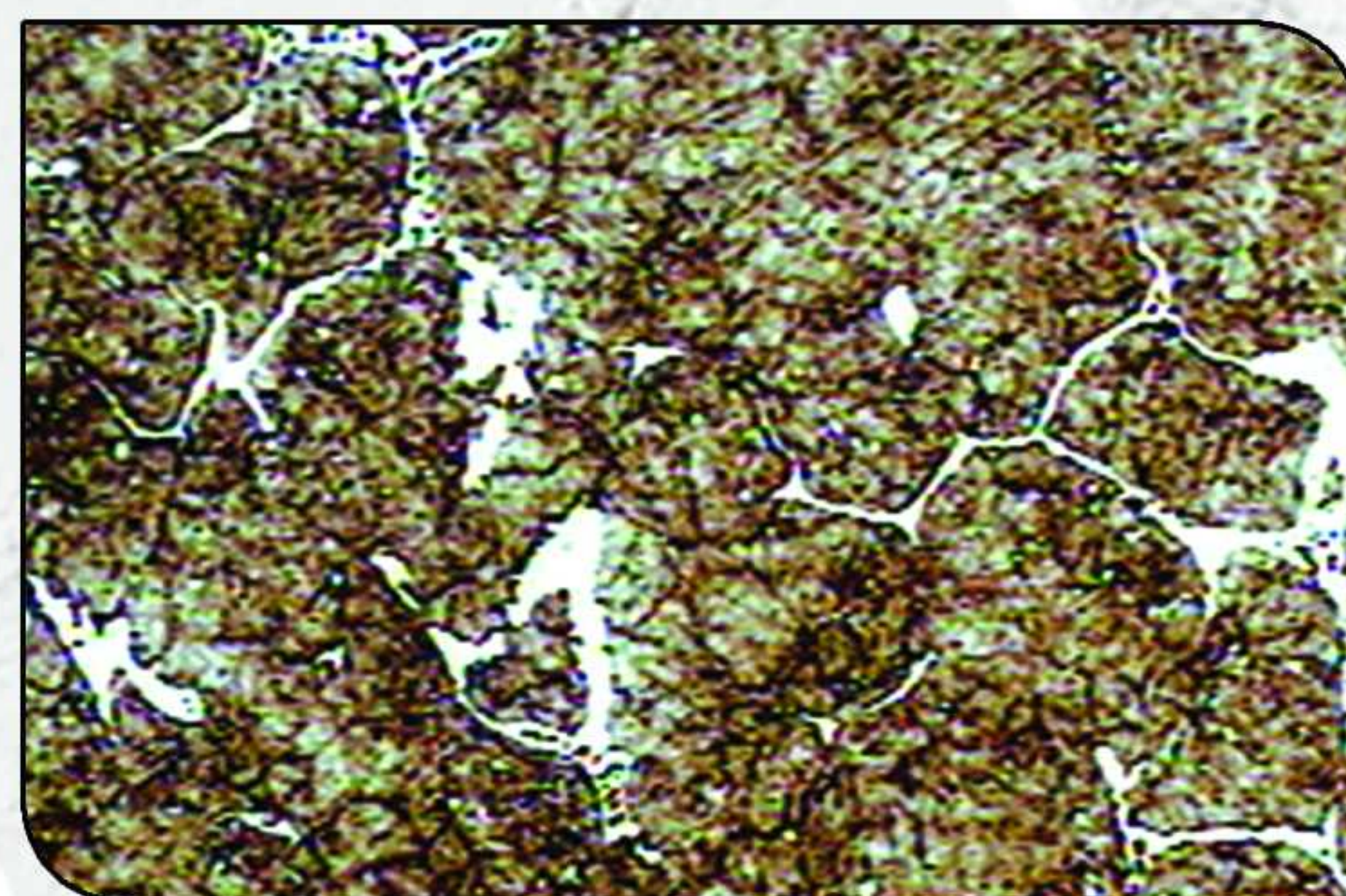
Semi High Speed Steel Rolls.

The micro structure consists of tempered martensite, Chromium carbides and dispersion of fine secondary carbides. These rolls have excellent thermal shock and wear resistance. Semi high steel rolls are mostly used for roughing and F1-F4 stands of Hot Strip Mills and finishing stands of small section mills and universal rings of section mills.

CSROLL
CHODANSAZAN



SSH72C -Tempered martensite with M_7C_3 and $M_{23}C_6$ carbides.(x400)



SSH72C -Tempered martensite with M_7C_3 and $M_{23}C_6$ carbides.(x100)

Chemical Composition and Mechanical Properties of Semi High Speed Steel Rolls.

Roll Grade	Barrels Hardness (Shc)	C (%)	Si (%)	Mn (%)	Cr (%)	Ni (%)	Mo (%)	W (%)	Nb+V (%)	Composition hardness and Properties of core material
SS H72C	72	0.3-1.0	0.4-1.0	0.3-1.0	0.5-8.0	0.2-1.2	2.0-4.0	0.8-1.5	0.2-1	See Page A
SS H 74C	74	0.3-1.0	0.4-1.0	0.3-1.0	0.5-8.0	0.2-1.2	2.0-4.0	0.8-1.5	0.2-1	See Page A
SS H 76C	76	0.3-1.0	0.4-1.0	0.3-1.0	0.5-8.0	0.2-1.2	2.0-4.0	0.8-1.5	0.2-1	See Page A
SS H 78C	78	0.3-1.0	0.4-1.0	0.3-1.0	0.5-8.0	0.2-1.2	2.0-4.0	0.8-1.5	0.2-1	See Page A

Note: Other roll grades not specified in the table can be produced on request. Cores for compound rolls can be produced on request with Grey, Compact or Nodular cast iron.

